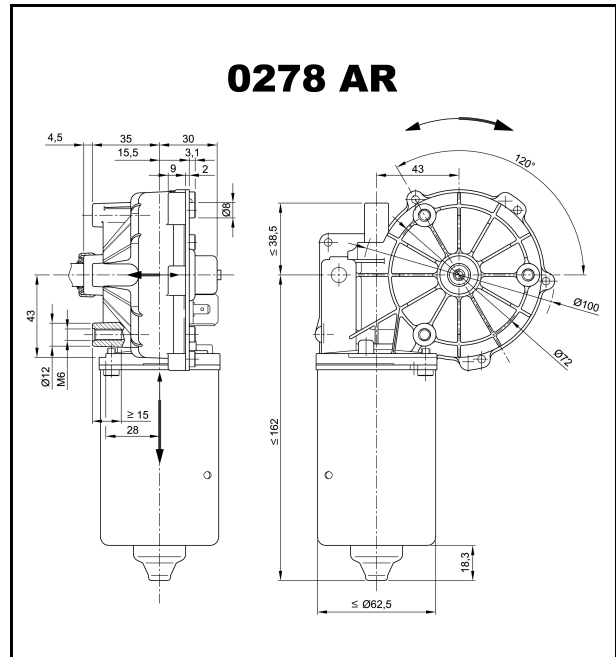
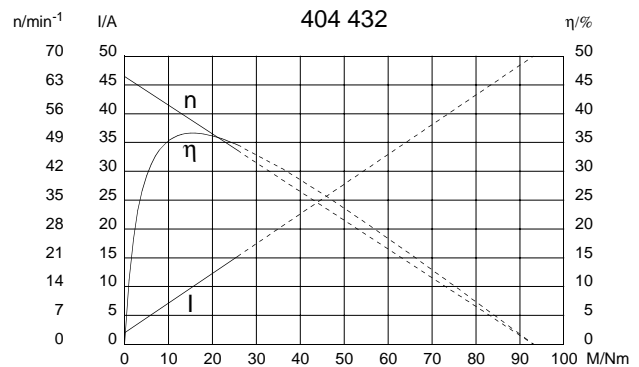


Technische Daten

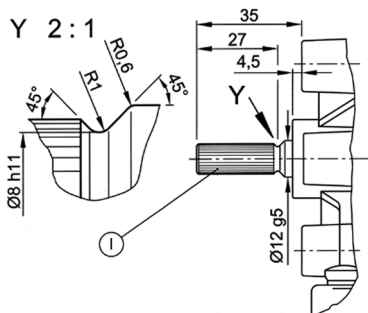
| | | | | |
|--------------------------------|------------|--|-------|-------|
| Nennspannung | U_N | [Volt] | 24 | |
| Leerlaufdrehzahl | n_0 | [min ⁻¹] | 65 | |
| Nenn Drehmoment | M_N | [Nm] | 8,0 | |
| Einschaltdauer | % | | | |
| EIN | [min] | | | |
| Anlaufmoment | M_A | [Nm] | 93,0 | |
| Getriebeübersetzung | i | | 74/1 | |
| Anschlusswiderstand | 2 Lamellen | R | [mΩ] | 340,0 |
| | 4 Lamellen | R | [mΩ] | 300,0 |
| Anschlussinduktivität | 2 Lamellen | L | [mH] | 0,80 |
| | 4 Lamellen | L | [mH] | 0,70 |
| Läuferträgheitsmoment | J_R | [kgm ²] × 10 ⁻⁶ | 85,0 | |
| Zahnradwerkstoff | | Kunststoff | | |
| Hall IC | | | X | |
| Impuls/Umdrehung Antriebswelle | | | 222 | |
| Ausgangskanäle | | | 1 | |
| Bemerkungen | | | | |
| Schutzart | | | IP 40 | |
| Gewicht | | [kg] | 1,70 | |



Performance and Physical Characteristics

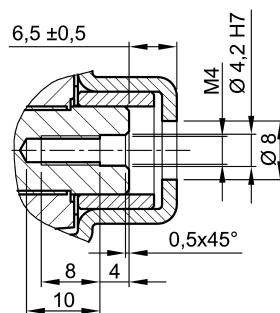


W 225

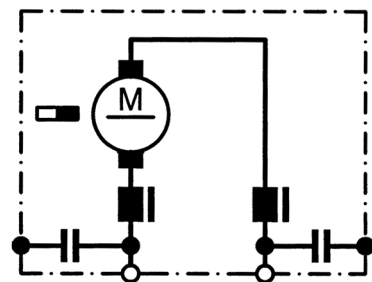


I Kerbverzahnung 8 x 10 DIN 5481

W 226



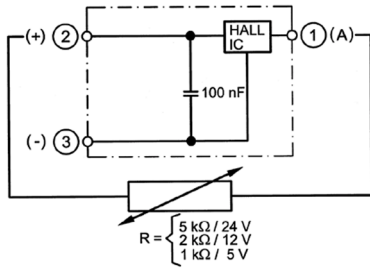
S 30



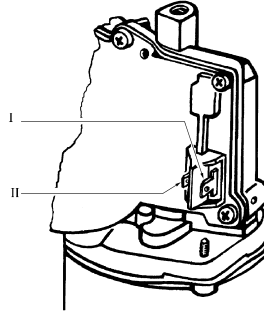
Baureihe 0278 (SW2L)

Motortyp 404 432

S 73

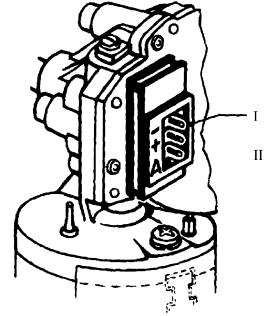


K 144



- I Flachsteckerenden 6,3 x 0,8 DIN 46 244
- II Flachsteckerenden 4,8 x 0,8 DIN 46 244

K 54



- I Panduit MLSS 100-03
- II Gegenstecker: Panduit CE 100 F22-03

Notizfeld: