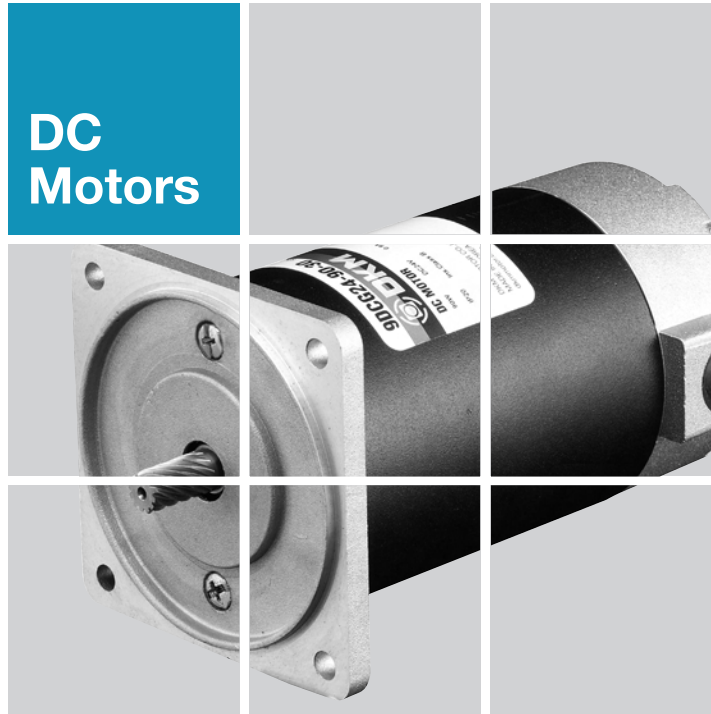


**DC  
Motors**



## Contents ▶▶

### **A** Information

- A-01** Product Coding System
- A-04** Products Lineup
- A-08** General Information
- A-12** Terminology
- A-15** Caution for Using

### **B** AC Motors

- B-01** Technical Data of AC Motor
- B-06** Induction Motor
- B-56** 2 Pole Motor
- B-74** Reversible Motor
- B-106** Brake Motor
- B-148** Clutch & Brake Motor
- B-162** Torque Motor
- B-176** Speed Control System
  - B-179** Speed Controller FX1000A
  - B-181** Speed Controller DSKM
  - B-186** Speed Control Induction Motor
  - B-222** Speed Control Reversible Motor
  - B-250** Speed Control Brake Motor
  - B-276** Speed Control Clutch & Brake Motor

### **C** DC Motors

- C-01** Technical Data of DC Motor
- C-04** DC Motor
- C-17** Speed Controller DSD-90

### **D** Gearboxes

- D-01** Technical Data of Gearbox
- D-07** Parallel Gearbox
- D-13** Worm Gearbox
- D-16** Inter-decimal Gearbox

### **E** Options

- E-01** Mounting Plate
- E-02** Extension Cable
- E-03** Output Flange / Output Shaft

# C DC Motors

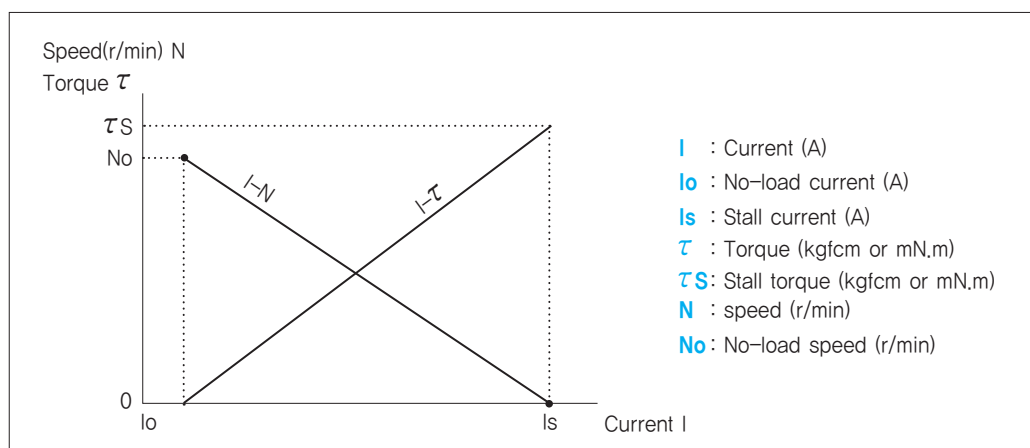
## Technical Data of DC Motor

### Features

- DC motor has a big starting torque and excellent mobility and when comparing with the same sized AC motor, the output is big and the efficiency is high.
- It is easy to control the speed and change the normal/reverse rotation.
- Comparing to AC motor, it is available to manufacture low voltage motor which can be applied to portable machine which uses various spec., especially battery power (12V, 24V).
- Due to the wear of brush, there is a limit in the service life.
- Due to brush and commutator, noise generates when starting.

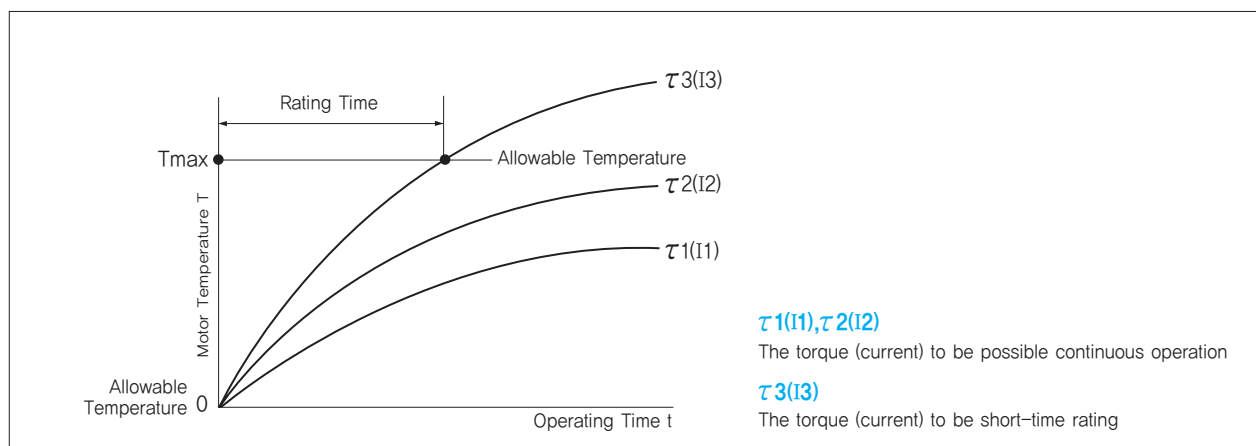
### Current, Torque and Speed (r/min)

When the voltage of power supply is fixed, D.C. magnet motor shows the characteristic in the relationship between torque, speed and current as below. The relationship is almost linear show as the above, and the speed decreases, and current increases conversely when increasing the torque to the output shaft motor. It is same until the output shaft of motor is done a stall, when ignored heat generation in the motor. (It is possible to control the torque by controlling the current.)



### Rating Time

According to increase of current (torque), heat generation in the motor increases. Generally, when the temperature of component parts in the motor is below than allowable temperature after it was saturated, it is possible to keep continuous operation. When it was not saturated in the allowable temperature, the time to exceed the temperature is rating time of motor and it is short-time rating specification. According to size and the specification, each motor model has different current (torque) value to be possible continuous operation.

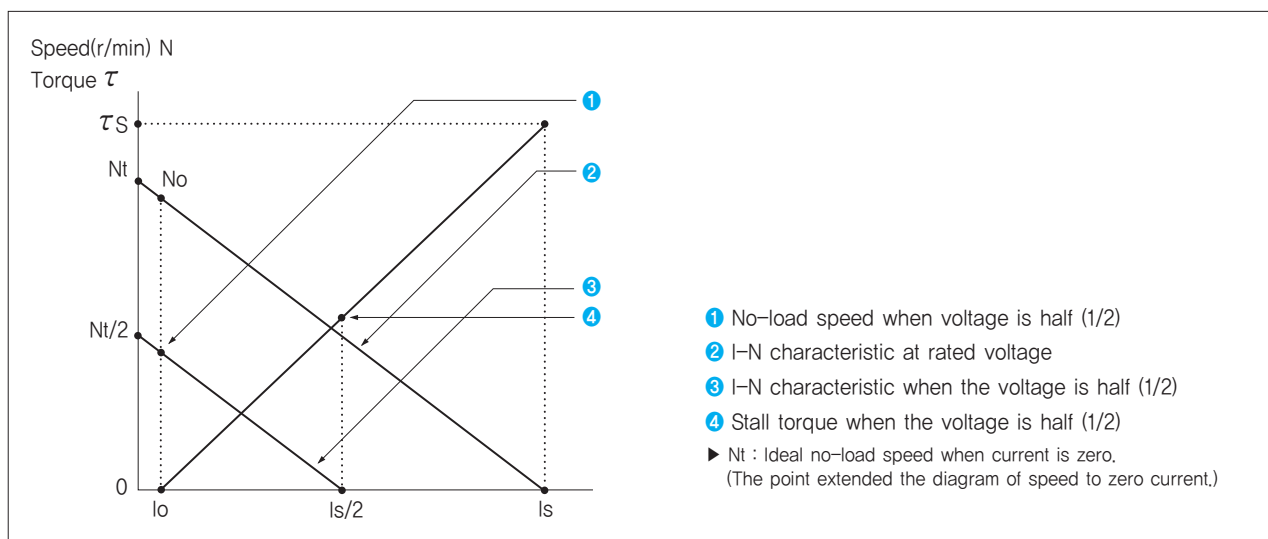


## Performance of DC Motor in Case of Voltage Change at Power Supply

DC magnet motor can change speed by changing power supply voltage. The relationship between torque( $\tau$ ), speed(N) and current(I) of motor when the voltage is half (1/2) is shown as below.

As the below figure, in the relationship between current and speed when power supply voltage was changed to half (1/2), ideal no-load speed "Nt" becomes "Nt/2" and it falls parallel to the performance of rated voltage.

The relationship between current and torque is same as the rated voltage, but the stall current " $\tau_s$ " falls accordingly as the stall current "Is" becomes "Is/2".



## Input, Output and Efficiency of DC motor

The input, output and efficiency can be calculated with the next formula.

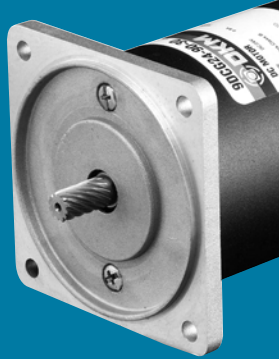
$$\text{Input(W)} = \text{Power Supply Voltage (V)} \times \text{Current (A)}$$

$$\text{Output(W)} = \text{Torque } \tau \text{ (kgfcm)} \times \text{Speed N (r/min)} \times 1.027 \times 10^{-2}$$

$$\text{Efficiency } \eta \text{ (\%)} = \frac{\text{Output(W)}}{\text{Input(W)}} \times 100$$

## General Specifications

Item	Specification
Insulation Resistance	100M $\Omega$ or more when DC500V MEGA is applied between the windings and the frame after rated motor operation under normal ambient temperature and humidity.
Dielectric Strength	Sufficient to withstand 1.5KV at 50Hz and 60Hz applied between the windings and the frame for 1 minute after rated motor operation under normal ambient temperature and humidity.
Temperature Rise	Temperature rise of windings are 80°C or less measured by the resistance change method after rated motor operation with connecting a Gearbox or equivalent heat radiation plate.
Insulation Class	Class B [130°C]
Ambient Temperature	-10°C~+40°C
Ambient Humidity	85% maximum



# DC Motor



DC Motor

## Index

DC Motor 25W (□80mm)

C-07

DKM AC/DC Geared Motor and Gearbox **C-04**

# C DC Motors

DC Motor 25W(□80mm)

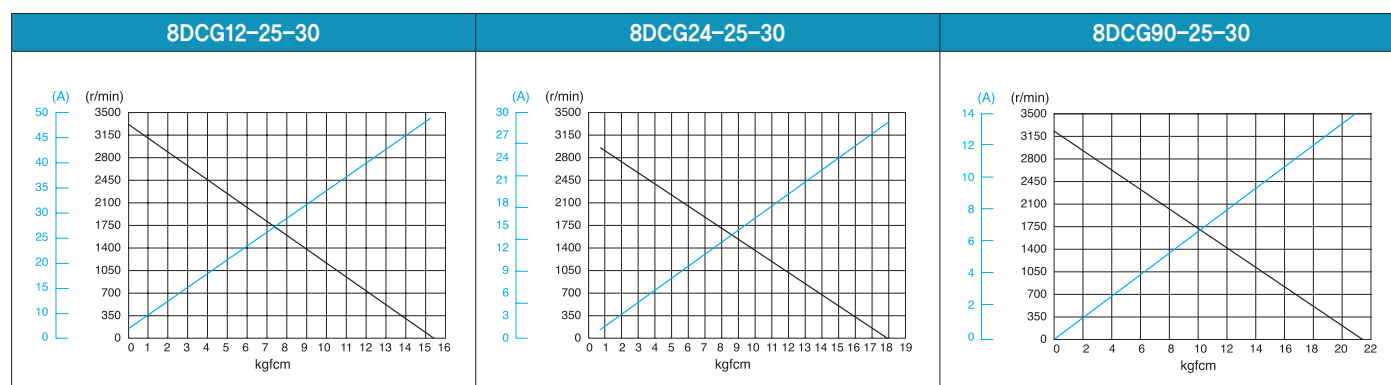
## 25W DC Motor 25W(□80mm)

### Motor Specification

Model 8DCG(W)□-25-30: Gear Type Shaft 8DCD□-25-30: D-Cut Type Shaft	Output W	Voltage V	Starting Current A	Starting Torque		No Load		Rated Load			
				kgfcm	N.m	Current A	Speed r/min	Current A	Speed r/min	Torque kgfcm N.m	
<b>8DCG(W)12-25-30</b>	25	12	48.00	15.50	1.500	1.80	3300	3.30	3100	0.811	0.081
<b>8DCG(W)24-25-30</b>	25	24	29.00	18.00	1.800	0.80	3050	1.90	2900	0.811	0.081
<b>8DCG(W)90-25-30</b>	25	90	10.00	21.50	2.150	0.04	3200	0.35	3000	0.811	0.081

- 1) Enter the phase & voltage code in the in the box (□) within the motor model name.  
2) Gear Type Shaft are for attaching Gearbox and D-Cut Type Shaft are for using motor only.

### Performance Curve



### Max. Permissible Torque at Output Shaft of Gearbox

Motor Model	Gearbox Model	Gear Ratio r/min	3	3.6	5	6	7.5	9	12.5	15	18	25	30	36	40	50	60	75	90	100	120	150	180	200	250	300	360	
			1000	833	600	500	400	333	240	200	167	120	100	83	75	60	50	40	33	30	25	20	17	15	12	10	8	
8DCG□ -25-30	8GBK□ BMH	Rated	kgfcm	2.0	2.4	3.4	4.0	5.0	6.1	8.4	10.1	12.1	15.2	18.2	19.9	22.1	27.6	33.1	41.4	49.6	55.1	66.2	80.0	80.0	80.0	80.0	80.0	
		N.m	0.20	0.24	0.33	0.40	0.49	0.59	0.82	0.99	1.19	1.49	1.79	1.95	2.16	2.70	3.24	4.05	4.86	5.40	6.49	7.84	7.84	7.84	7.84	7.84		
		12V	kgfcm	38.6	46.3	64.3	77.2	80.0	80.0	80.0	80.0	80.0	80.0	80.0	80.0	80.0	80.0	80.0	80.0	80.0	80.0	80.0	80.0	80.0	80.0	80.0	80.0	80.0
		N.m	3.78	4.54	6.30	7.56	7.84	7.84	7.84	7.84	7.84	7.84	7.84	7.84	7.84	7.84	7.84	7.84	7.84	7.84	7.84	7.84	7.84	7.84	7.84	7.84	7.84	
		24V	kgfcm	44.8	53.8	74.7	80.0	80.0	80.0	80.0	80.0	80.0	80.0	80.0	80.0	80.0	80.0	80.0	80.0	80.0	80.0	80.0	80.0	80.0	80.0	80.0	80.0	80.0
		N.m	4.39	5.27	7.32	7.84	7.84	7.84	7.84	7.84	7.84	7.84	7.84	7.84	7.84	7.84	7.84	7.84	7.84	7.84	7.84	7.84	7.84	7.84	7.84	7.84	7.84	7.84
90V	kgfcm	53.5	64.2	80.0	80.0	80.0	80.0	80.0	80.0	80.0	80.0	80.0	80.0	80.0	80.0	80.0	80.0	80.0	80.0	80.0	80.0	80.0	80.0	80.0	80.0	80.0		
		N.m	5.25	6.30	7.84	7.84	7.84	7.84	7.84	7.84	7.84	7.84	7.84	7.84	7.84	7.84	7.84	7.84	7.84	7.84	7.84	7.84	7.84	7.84	7.84	7.84	7.84	

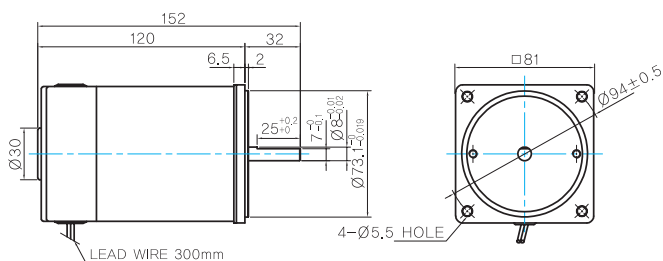
Motor Model	Gearbox Model	Gear Ratio		10	12	15	18	25	30	36	50	60		
		r/min	300	250	200	167	120	100	83	60	50			
8DCW□-25-30	8WD□BL/□BR/ □BRL	Rated	kgfcm	6.7	7.8	9.4	10.8	14.2	16.1	18.7	24.3	26.8		
			N.m	0.65	0.76	0.92	1.06	1.39	1.57	1.83	2.38	2.62		
		12V	kgfcm	112.2	102.0	112.2	102.0	102.0	112.2	102.0	112.2	102.0	102.0	81.6
			N.m	11.00	10.00	11.00	10.00	10.00	11.00	10.00	11.00	10.00	10.00	8.00
		24V	kgfcm	112.2	102.0	112.2	102.0	102.0	112.2	102.0	112.2	102.0	102.0	81.6
			N.m	11.00	10.00	11.00	10.00	10.00	11.00	10.00	11.00	10.00	10.00	8.00
90V	kgfcm	112.2	102.0	112.2	102.0	102.0	112.2	102.0	112.2	102.0	102.0	81.6		
	N.m	11.00	10.00	11.00	10.00	10.00	11.00	10.00	11.00	10.00	10.00	8.00		

- 1) Enter the phase & voltage code in the box (□) within the motor model name.  
2) Enter the gear ratio in the box (□) within the Gearbox model name.  
3) A colored background indicates gear shaft rotation in the same direction as the motor shaft; a white background indicates rotation in the opposite direction.  
4) The rotating speed is calculated by dividing the motor's synchronous speed (50Hz: 1,500r/min, 60Hz: 1,800r/min) by the gear ratio.  
The actual speed is 2~20% less than the displayed value, depending on the size of the load.

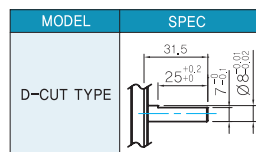
## Dimensions

### MOTOR ONLY

● MOTOR MODEL: 8DCD□-25-30

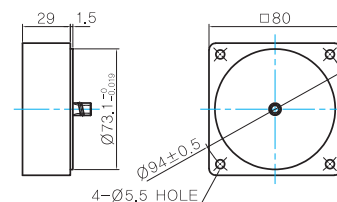


● MOTOR OUTPUT SHAFT



### INTER-DECIMAL GEARBOX

● MODEL: 8XD10□□

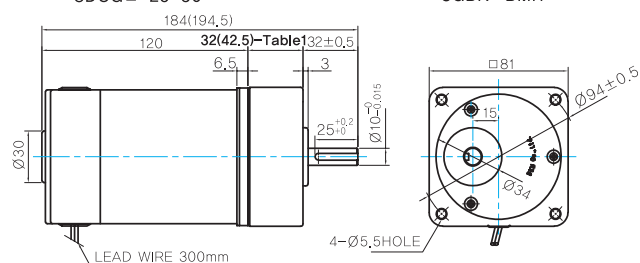


## GEARED MOTOR

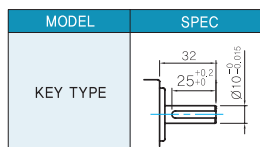
### G TYPE GEARBOX

● MOTOR MODEL:  
8DCG□-25-30

● GEARBOX MODEL:  
8GBK□BMH



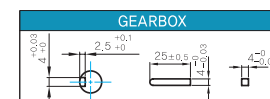
● GEARBOX OUTPUT SHAFT



● 32(42.5)-Table1

SIZE(mm)	GEAR RATIO
32	8GBK3BMH ~ 8GBK18BMH
42.5	8GBK25BMH ~ 8GBK360BMH

● KEY SPEC

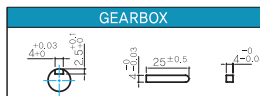
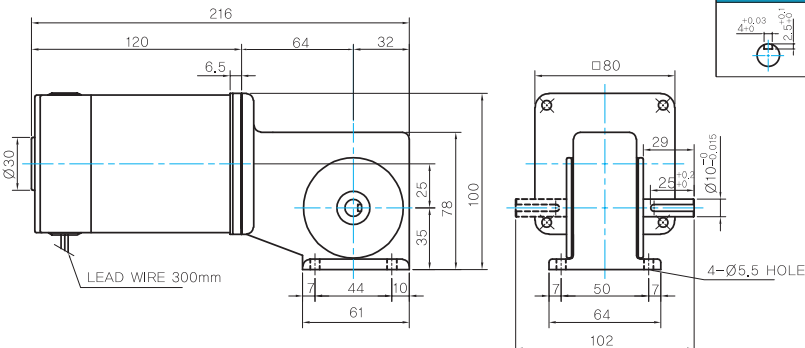


### W TYPE GEARBOX

● MOTOR MODEL:  
8DCW□-25-30

● GEARBOX MODEL:  
8WD□BL/BR/BRL

● KEY SPEC



### WEIGHT

PART	WEIGHT(Kg)	
MOTOR	1.5	
GEAR BOX	8GBK3BMH ~ 8GBK18BMH	0.48
	8GBK25BMH ~ 8GBK30BMH	0.61
	8GBK36BMH ~ 8GBK180BMH	0.67
	8GBK200BMH ~ 8GBK360BMH	0.63
	8WD□BL/BR/BRL	0.67
	8XD10□□	0.44

## Motor Images

